



For the most up to date information, please visit our website:
www.bradleycollection.com

For enquires please email us at:
info@bradleycollection.com



EUROPEAN ENQUIRIES:

The Bradley Collection Ltd.
Lion Barn Maitland Road
Needham Market Suffolk
IP6 8NS UK
Telephone +44 (0)845 118 7224
Facsimile +44 (0)845 118 7228

WORLD ENQUIRIES:

The Bradley Collection Inc.
3455 S. La Cienega Boulevard Suite A
Los Angeles California
90016 USA
Telephone +1 (310) 815 8255
Facsimile +1 (310) 815 9255

LONDON SHOWROOM:

The Bradley Collection Ltd.
2nd Floor South Dome
Chelsea Harbour Design Centre
London SW10 0XE UK
Telephone +44 (0)20 7351 6496
Facsimile +44 (0)20 7351 3761

the**bradley**collection

FOUNDATION
DRAPERY SYSTEM

Specialised fixings for mounting brackets will be required in certain situations and are not provided as standard.

The Bradley Collection reserves the right to modify design and materials without prior notice as part of a process of continual product improvement. Due to printing limitations colours in this brochure may not be accurate.

Products are protected by Design Rights, under provisions of Copyright, Designs & Patents Act 1988.

Bradley®, The Bradley Collection® and the Logo are registered Community trademarks of The Bradley Collection Ltd in Europe and registered trademarks of the Bradley Collection, Inc. in the USA.

FOUNDATION

DRAPERY SYSTEM

Foundation *"an underlying basis or principle for something"*

Simple design, quality build, perfect functionality,

full range of sizes, widest choice of finishes.

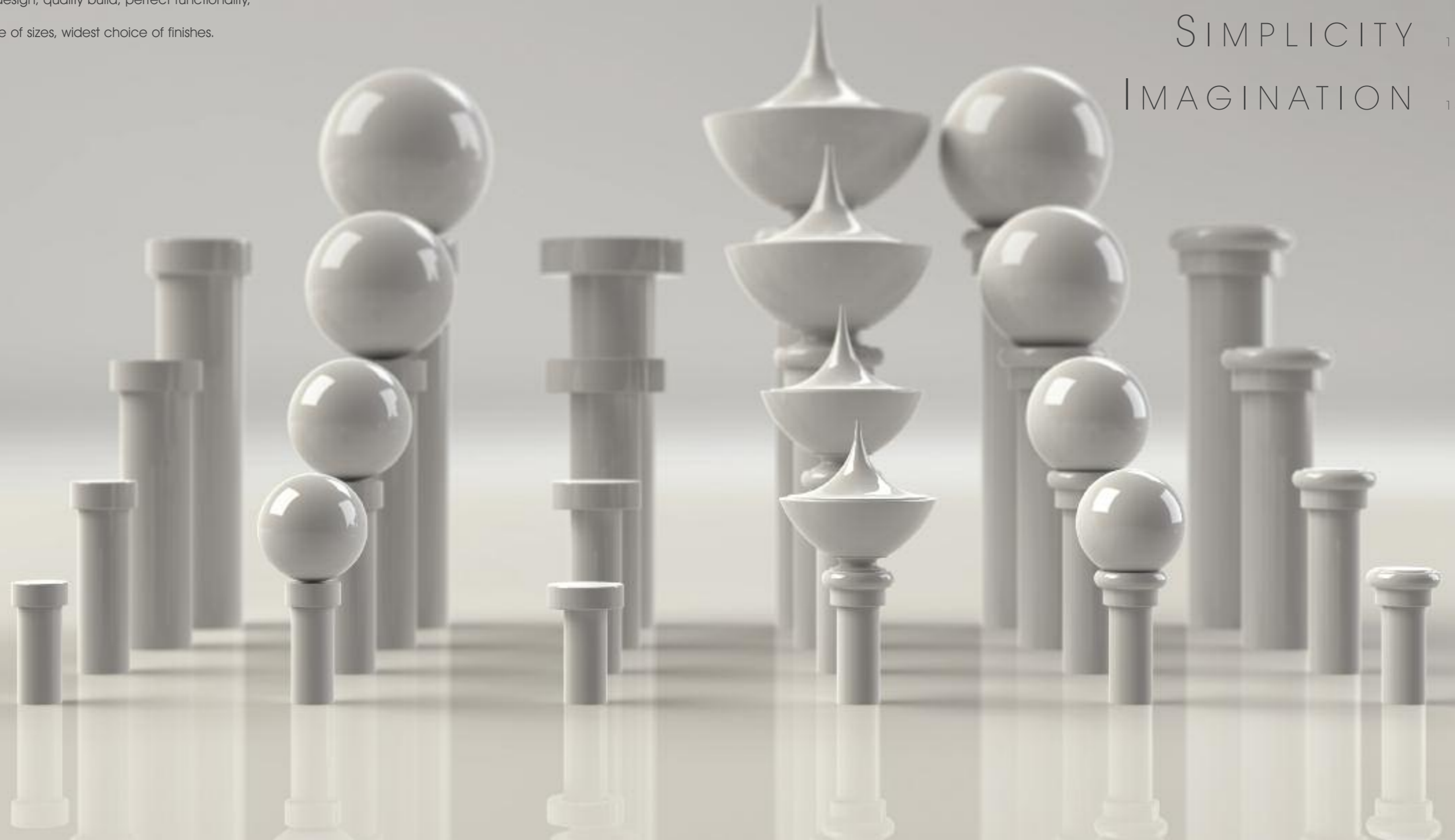
DESIGN 03-04

FIT 05-06

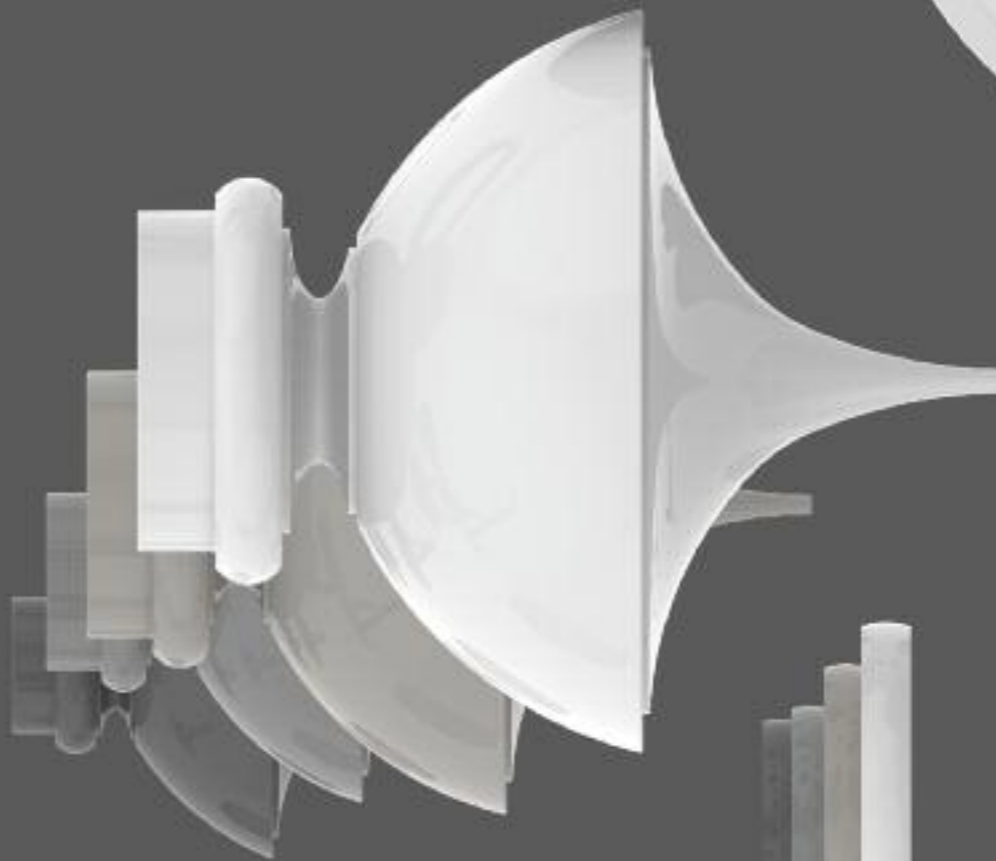
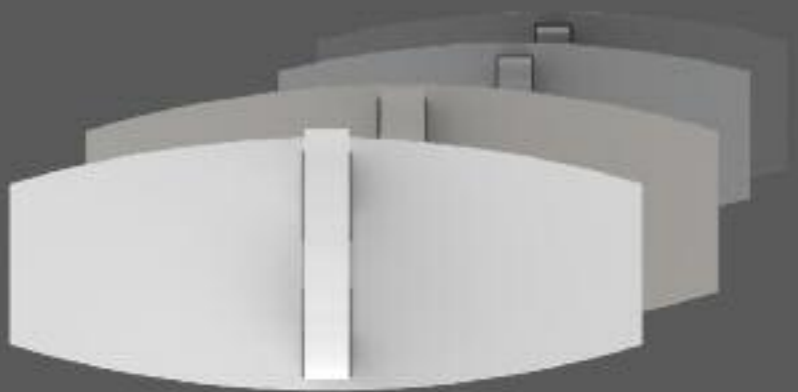
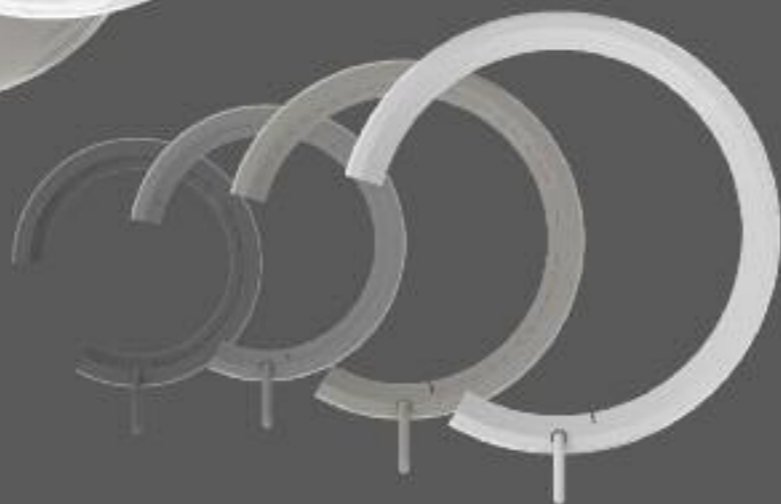
FINISH 07-10

SIMPLICITY 11-12

IMAGINATION 13-18



FOUNDATION DRAPERY SYSTEM



DESIGN

Design *"to plan or make something, artistically or skillfully"*

Each of these simple forms available in four sizes,

19mm ($\frac{3}{4}$ "), 25mm (1"), 38mm (1 $\frac{1}{2}$ ") and 50mm (2").



FOUNDATION

DRAPERY SYSTEM

FIT

Fit *"to be of the correct size or shape for a situation"*

Any length, any shape, any size, any window.

Poles of 19mm ($\frac{3}{4}$ "), 25mm (1"), 38mm (1 $\frac{1}{2}$ ") and 50mm (2")

All can be formed to shape and cut to fit.



Standard Bay Applications



FOUNDATION

DRAPERY SYSTEM

FINISH - SIGNATURE

Finish - Signature "to apply a standard surface texture"

These signature finishes are now available as standard on every component to give greater flexibility.



Silver



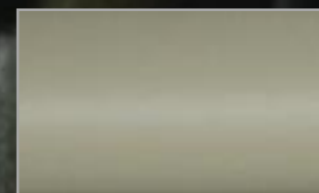
Bone



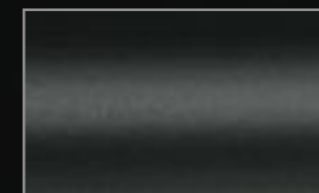
Platinum



Polished



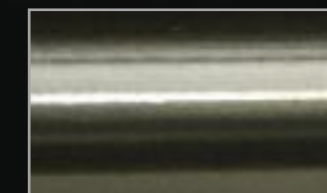
Parchment



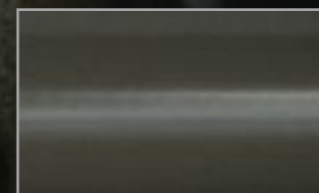
Flint



Champagne



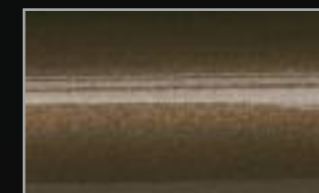
Brass Toned



Clay



Piano White



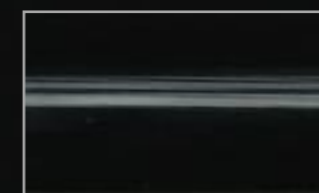
Cognac



Bronzed



Cocoa



Piano Black



Graphite



Waxed

Due to printing limitations colours in this brochure may not be accurate. Colour samples are available on request.

FOUNDATION

DRAPERY SYSTEM

FINISH - CUSTOM

Finish - Custom *"to apply a customers choice of surface texture"*

With the new custom colour service, choose from the colour selector for a truly bespoke solution.



Colour Selector
Choose from over 200 colour / finish options



FOUNDATION DRAPERY SYSTEM



Stud - Simple Design

ø19mm (3/4") : L 3mm (1/8") x H 25mm (1")
 ø25mm (1") : L 3mm (1/8") x H 32mm (1 1/4")
 ø38mm (1 1/2") : L 3mm (1/8") x H 48mm (1 7/8")
 ø50mm (2") : L 4mm (3/16") x H 62mm (2 7/16")



Stud - Detail Design

ø19mm (3/4") : L 9mm (3/8") x H 32mm (1 1/4")
 ø25mm (1") : L 9mm (3/8") x H 40mm (1 9/16")
 ø38mm (1 1/2") : L 10mm (3/8") x H 59mm (2 5/16")
 ø50mm (2") : L 12mm (7/16") x H 74mm (2 7/8")



Disc - Simple Design

ø19mm (3/4") : L 3mm (1/8") x H 34mm (1 5/16")
 ø25mm (1") : L 3mm (1/8") x H 44mm (1 3/4")
 ø38mm (1 1/2") : L 3mm (1/8") x H 65mm (2 9/16")
 ø50mm (2") : L 4mm (3/16") x H 85mm (3 3/8")



Ball - Detail Design

ø19mm (3/4") : L 53mm (2 1/16") x H 48mm (1 7/8")
 ø25mm (1") : L 64mm (2 1/2") x H 60mm (2 3/8")
 ø38mm (1 1/2") : L 83mm (3 1/4") x H 80mm (3 1/8")
 ø50mm (2") : L 103mm (4 1/16") x H 100mm (4")



Ball - Simple Design

ø19mm (3/4") : L 51mm (2") x H 48mm (1 7/8")
 ø25mm (1") : L 63mm (2 1/2") x H 60mm (2 3/8")
 ø38mm (1 1/2") : L 83mm (3 1/4") x H 80mm (3 1/8")
 ø50mm (2") : L 104mm (4 1/16") x H 100mm (4")



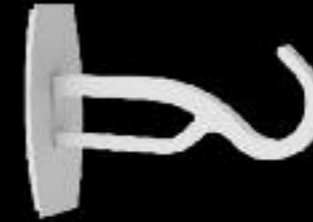
Urn - Detail Design

ø19mm (3/4") : L 74mm (2 15/16") x H 70mm (2 3/4")
 ø25mm (1") : L 89mm (3 1/2") x H 80mm (3 1/8")
 ø38mm (1 1/2") : L 118mm (4 9/16") x H 112mm (4 3/8")
 ø50mm (2") : L 141mm (5 9/16") x H 134mm (5 1/4")

SIMPLICITY

Simplicity *"the characteristic of being less complicated or easier"*

A rational range where every finial is available in four sizes, with a simple bracket system.



Single Bracket - Side

19mm (3/4") and 25mm (1") Projection to pole centre:
 - 60mm (2 3/8")
 - 100mm (4")

38mm (1 1/2") and 50mm (2") Projection to pole centre:
 - 100mm (4")



Single Bracket - Mid

19mm (3/4") and 25mm (1") Projection to pole centre:
 - 60mm (2 3/8")
 - 100mm (4")

38mm (1 1/2") and 50mm (2") Projection to pole centre:
 - 100mm (4")



Single Bracket - Passing

19mm (3/4") and 25mm (1") Projection to pole centre:
 - 60mm (2 3/8")
 - 100mm (4")

38mm (1 1/2") and 50mm (2") Projection to pole centre:
 - 100mm (4")



Single Bracket - Recess

19mm (3/4") 25mm (1") 38mm (1 1/2") and 50mm (2")



Lined Hoop Ring

Ring Drops:
 ø19mm (3/4") : 46mm (1 13/16")
 ø25mm (1") : 51mm (2")
 ø38mm (1 1/2") : 66mm (2 5/8")
 ø50mm (2") : 80mm (3 1/8")



Lined Passing Ring

Ring Drops:
 ø19mm (3/4") : 46mm (1 13/16")
 ø25mm (1") : 51mm (2")
 ø38mm (1 1/2") : 66mm (2 5/8")
 ø50mm (2") : 80mm (3 1/8")

FOUNDATION

DRAPERY SYSTEM

IMAGINATION

Imagination *"the action of forming new ideas or concepts of external objects not present to the senses"*

Any finish and design is available at every scale.



FOUNDATION

DRAPERY SYSTEM

IMAGINATION

Imagination "*Mental creative ability*"

Colour, size, mood. There are no limits.

FOUNDATION

DRAPERY SYSTEM

Foundation "How to make the complex simple and provide true choice and individual expression"

Priscilla Bradley

